

SIR RICHARD ARKWRIGHT'S
**CROMFORD
MILLS**



Visitor Guide 2023

Visit cromfordmills.org.uk

FREE
ENTRY



@cromfordmills1771 CromfordMills CromfordMills

Uncover Our Incredible Story.

At one of the world's greatest industrial heritage sites

Nestled in the heart of the Derbyshire Dales and free to enter, Cromford Mills is a lasting icon of the Industrial Revolution and gateway to the Derwent Valley Mills UNESCO World Heritage Site. Discover the story that changed the world!

Built by Sir Richard Arkwright in 1771, Cromford Mills revolutionised cotton production. Within 20 years, there were almost 150 Arkwright-style mills across the UK. So, let's show you what life was like back then. Meet Arkwright face-to-face and discover how invention and ingenuity changed our lives forever.



The Arkwright Experience



Book Online!
cromfordmills.org.uk

Visitor Centre

Free entry

Find out more about our Derwent Valley Mills World Heritage Site and its global cotton connections.

The Arkwright Experience

Show 1 - Arkwright's Cromford Mills

Show 2 - When Arkwright Met Strutt

Price for both shows: Adult £6.50, Child 12+ £2.50, Under 12s Free
Watch history in the making in the building where it all began, with ground breaking CGI technology. Pre-booking recommended!

Audio Tour

Annual Cotton Spinner's Pass

Adult £7.50, Child 12+ £2.50, Under 12s Free

Discover more about the main mill complex, St Mary's Church, the Canal Wharf and Cromford Village.

Guided Tours & More

Annual Mill Manager's Pass

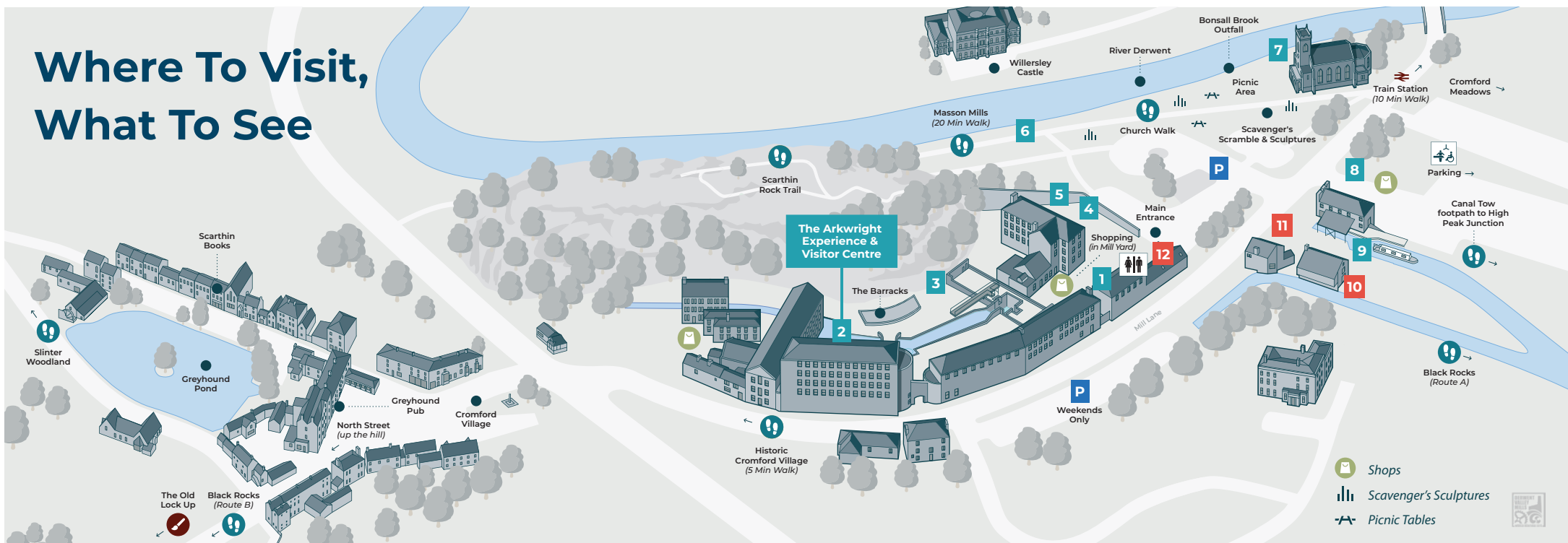
(inc. guided tours, audio tour and Arkwright Experience shows)

Adult £15, Child 12+ £2.50, Under 12s Free

Our guides explain how Arkwright used revolutionary techniques to turn the site into an unrivalled international success. A fully inclusive pass that's great value and is valid for 12 months.

Group rates also available - see cromfordmills.org.uk

Where To Visit, What To See



1 Visitor Welcome & Shops

Start your day here to find new ways to explore our world-famous site and learn more about our restoration work and other exciting projects. Cromford Mills is a place of striking contrast, where the sheer power of the Industrial Revolution sits alongside the beauty of some of Derbyshire's most picturesque countryside. A team member can help you make the most of your day by explaining what's on offer and booking your tickets ahead of time.

2 The Arkwright Experience & Visitor Centre

Immerse yourself in the site's history and find out more about the Derwent Valley. Watch Sir Richard Arkwright come to life in his first mill with our ground breaking CGI shows.

3 Second Mill Viewpoint

Experience the vastness of Arkwright's second mill building and its internal wheel pit. Once a 7-storey building that was 120 feet long and an ambitious project, now it lies in ruins.

4 Education Room

Education visits, workshops and events are held in this room. Find out more about educational visits at cromfordmills.org.uk/learning.

5 Exhibition & Tour Room

Experience our fascinating exhibitions and tours. Meet outside the Mill Shop for the start of your tour and learn more about the mill's history. See a small scale, replica water frame and learn about spinning cotton.

6 Beyond the Mill Walls

A great area to take a riverside stroll, discover local wildlife, follow our Scavengers' Scramble Sculpture trail and enjoy a family picnic.

7 St Mary's Church

Explore the 18th century family chapel where Sir Richard Arkwright was interred and see beautiful Victorian wall paintings by A. O. Hemmings.

8 Gothic Warehouse

Built in 1794, the canal warehouse was designed for goods coming into Cromford. It is now used for a variety of events throughout the year.

9 Canal Boat Trips & Towpath

Book a canal trip with Birdswood (birdswood.org) or walk down the canal to High Peak Junction (suitable for pushchairs and wheelchairs).

10 Wheatcroft's Wharf Café

11 Counting House Coffee Stop

12 Arkwright's Café

See inside for details of our events



Shop Local

To complete your day out at Cromford Mills, you may want to buy a memento of your visit - or perhaps you'll find that special present for someone who appears to have everything?



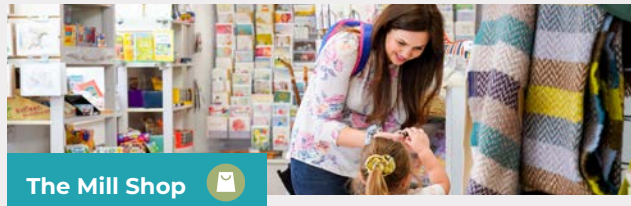
WeaveKnitIt



Cromford Mill Cheese Shop



The Cromford Mill Antique Centre



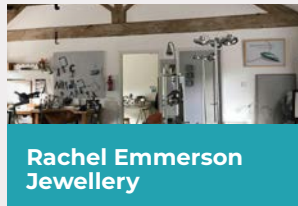
The Mill Shop



WeaveMadelt



Arkwright's Attic



Rachel Emmerson Jewellery



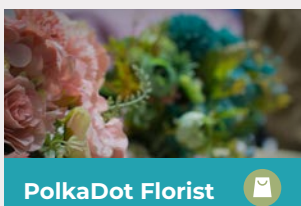
The Old Lock Up



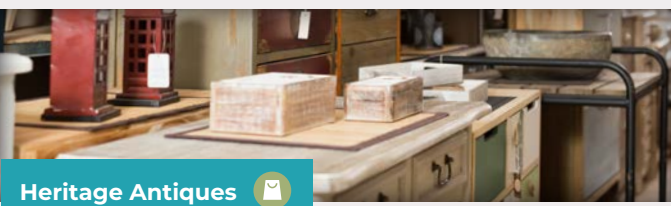
Countryside Books



YES Bridal Studio



PolkaDot Florist



Heritage Antiques



Arkwright Repair Shop



Opening times may vary. See website for more details.

There's never been a better time to 'shop local' and support small businesses, and shopping at Cromford Mills offers something unique and personal.



Food & Drink

10
SEE
MAP

Wheatcroft's Wharf Café

Take in the picturesque views from our canal-side café. Enjoy a lovely breakfast, light bite or a range of seasonal dishes. Indoor and outdoor seating available.

11
SEE
MAP

Counting House Coffee Stop

Ready to hit the trail or looking to grab a sandwich on the go? Visit our new coffee stop, a great place to find tasty treats while you are on the move.



12
SEE
MAP

Arkwright's Café

Soak up the history of the mill in our license café and experience the best scones in Derbyshire! Indoor and outdoor seating available.

Well-behaved dogs are welcome at all our cafés.



What's On

More details at cromfordmills.org.uk



March

- SUN 5th** Antiques & Vintage Fair 10am-4pm
- SUN 19th** Artisan Market 10am-4pm
- SAT 25th** Peak Paddle Sports Factory Sale 10am-4pm
Big savings from the local paddle sport manufacturer.
- THU 30th** Highlighting Heritage: Royal Crown Derby 7pm
A journey through the history of Royal Crown Derby from 1750 to today. *At the Gothic Warehouse, Cromford Mill.*

April

Easter Weekend

Family fun activities for all ages.
10am - 4pm



- SUN 16th** Artisan Market 10am-4pm
- THU 27th** Highlighting Heritage: Ellen Morewood 7pm
The life of Ellen Morewood of Alfretton Park, a formidable Georgian businesswoman. *At No.28 Market Place, Belper.*

Cromford Mills Dog Show

You and your canine companions are invited to join us for our fabulous dog event with stalls, displays and entertainment. **Please register at cromfordmills.org.uk. 10am - 4pm**



May

- SUN 7th** Antiques & Vintage Fair 10am-4pm
- SAT 20th** Lumsdale Garden Party 1pm-4pm
Come to our annual garden party at Ivy Cottage, upper Lumsdale.
- SUN 21st** Artisan Market 10am-4pm
- THU 25th** Highlighting Heritage: The Mills Uncovered 7pm
How a 3D survey uncovered Cromford Mill secrets as part of a project to return water power. *At the Gothic Warehouse, Cromford Mill.*

June

- SAT 3rd** NDCGS Plant Sale 11am - 3pm
North Derbyshire Cottage Garden Society returns once again with its popular plant fair in the Mill yard.
- SAT 17th** Wirksworth Community Orchestra from 2.30pm
The WCO in concert, playing favourites from Stage & Screen
- SUN 18th** Artisan Market 10am-4pm

Cromford Mills Beer Festival

Booze Hound and Cromford mills team up to bring you the best cask ale, craft beer, live music, and street food. What's not to like! **12pm onwards**



- THU 29th** Highlighting Heritage: The view from the train 7pm
The history of the Derwent Valley Line, from the development of waterways and early railways. *At No.28 Market Place, Belper.*

July

- SUN 2nd** Antiques & Vintage Fair 10am-4pm
- SUN 16th** Artisan Market 10am-4pm

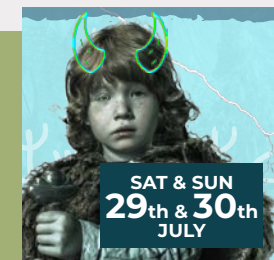


HandleBards: Midsummer Night's Dream

Join the HandleBards in the mill yard for a hilarious production of Shakespeare's A Midsummer Night's Dream. **6pm onwards**

Loki: Lord of Mischief

Award winning Wild Geese Theatre Company return to the mill. Will Loki prove to that he's more than his mischief?



August

Vikings of Middle England

Vikings takeover the mill!

Experience what life was like over 1,000 years ago with Viking camps, demonstrations, weapons display, battle skirmishes and family activities. **10am - 4pm**

SAT & SUN 5th & 6th AUG



TUE
8th
TO
FRI
25th

Model Railway Exhibition

10am-4pm

The Chesterfield Railway Modellers return with their fantastic model of Wingfield Junction, inspired by North Derbyshire 1948-1972. This incredible model is popular with visitors of all ages.

Cromford Mills Comic Con

Our 1st Comic Con will be an epic celebration of Sci-fi & Fantasy. Don't miss our intergalactic display of models, props, puppets and costumes from classic sci-fi and beyond.

10am - 4pm

SUN
13th
AUG

SUN
20th

Artisan Market

10am-4pm

CM Adventure Weekend

Get ready for adventure!

Our popular Activity weekend lands for all 3 days of the Bank holiday weekend. Free activities for children of all ages including kayaking and climbing. 10am - 4pm

SAT, SUN & MON
26th - 28th
AUG

September

SUN
3rd

Antiques & Vintage Fair

10am-4pm

SUN
17th

Artisan Market

10am-4pm

THU
28th

Highlighting Heritage: Butterley Engineers 7pm

A look at the life and achievements of The Butterley Company's Great 19th Century Engineers. At the Gothic Warehouse, Cromford Mill.

Georgian Derbyshire Festival

Derbyshire in the Georgian Era was a place of wonder, of surprises and innovations. Cromford Mills takes part in the festival and hosts themed events across the weekend. 10am - 4pm

SAT & SUN
30th & 1st
SEPT OCT

October

SUN
8th

Northern Potters Ceramics Fair

10am-4pm

A show filled with an amazing range of all things ceramic

SUN
15th

Artisan Market

10am-4pm

Shine A Light

THU & FRI
26th & 27th
OCT

A spectacular large-scale projection bringing history to life through light & sound.

6pm - 9pm

THU
26th

Highlighting Heritage: Antiquities & Treasure 7pm

This talk will introduce the Portable Antiquities Scheme and Treasure in Derbyshire. At No.28 Market Place, Belper.

November

SUN
5th

Antiques & Vintage Fair

10am-4pm

SUN
19th

Artisan Market

10am-4pm

December

Christmas Weekends

Wrap up warm for our festive Winter markets and **don't miss Father Christmas!** Our on-site retailers will be joined by a host of handmade gifts, hot drinks and live music to spread Christmas cheer. 10am-4pm

FIRST 3
WEEKENDS
IN DEC

FRI
15th

Cromford Christmas Carols service From 6pm

A highlight of the Festive period. Mince pies in the yard, then wassail to the church to sing some classic carols.

JOIN IN THE FUN!

We have family activities every half term and Bank Holiday throughout the year!



Local Walks

Nestled in the heart of the Derbyshire Dales, Cromford Mills and the surrounding area are among the UK's best-loved places to visit. There's something for everyone from family-friendly nature trails, wild-play and picnic areas through to a gentle stroll along Cromford Canal, once the hub of Derbyshire's industry.

Beyond the Mill Walls



Scavenger's Scramble with wooden sculptures and more, in our riverside meadow area. It is a great place to enjoy wildlife and nature while having a picnic near the River Derwent or adventure up the steps to Scarthin Rock.

Cromford Canal

Last used as a working waterway in 1944, the canal is now a Site of Special Scientific Interest (SSSI). Take the 5 mile walk along the canal from Cromford Wharf to Ambergate. Sites of particular interest along the way include Leawood Pumphouse, built in 1849 and still in pristine working order and Aqueduct Cottage, once part of Florence Nightingale's family estate and poised for restoration. Don't forget to look out for Arkwright's ducks, furry water voles, moorhens and many other birds along the way.



Black Rocks

Originally mined for lead, Black Rocks offers fantastic views of Matlock Gorge, Cromford Mills, Carsington Reservoir and the Derwent Valley. Start your walk at Cromford Canal and follow the High Peak Trail to Black Rocks (*Route A*). You can then head across Cromford Moor with its woodland trails and heather moorland. Alternatively, take *Route B* from Cromford Village. (*See map for routes*).

Some of our walks are out in the open, some are deep in the valley, and some are set in woodland, but wherever they are, there's no getting away from the fact that they are stunning.

Dunsley Meadows

The meadows, which adjoin the Slinger Woodland, consist of seven small fields that once were part of the upland commons of Cromford and Middleton villages on which the villagers had grazing rights.

Cromford Village

Arkwright developed the village by building houses with a well-lit third storey for spinning, many of which survive today. By 1782, there were 5,000 people spinning locally. There are a number of shops and places to eat and drink. Guided audio tours are available from the Mill shop.



Slinger Woodland

A beautiful landscape of ancient ash woodland and rich flowering woodland floor. Take the path that follows the famous Bonsall Brook (which powered Arkwright's Mill) and discover old water features, the corn mill and more. This area is abundant with wildlife and is a Special Area of Conservation.

“A fabulous day out for everyone. Lots to learn about, too - the Arkwright shows really take you back in time – unmissable!”



Looking for something to do in the school holidays?



There's always something on at the mill for families. Dress up as a mill worker, enjoy free trails and activities, and book on to a time travelling family tour. See our website for more information, or ask in the mill shop.

HELP PRESERVE OUR HERITAGE



Join Us

BECOME A MEMBER

Our members have two things in common: a love for our local heritage and a passion for education and preservation. Become a member and benefit from free car parking, invitations

to exclusive events, regular online lectures, our monthly newsletter and special offers.

Join now! Ask a team member or scan the QR code below for more.



Help Us

VOLUNTEER TODAY

Working with our specialist heritage and education teams, **our volunteers play a vital role** in caring for the Mills and our wider estates. In return, our volunteers enjoy special discounts,

invitations to social events, free parking and much more. We have a wide variety of roles available

Ask a member of our team or scan the QR code below.



Donate

THANK YOU

Since 1979, **your generous donations have helped us to maintain our iconic sites.** We would not have achieved as much without the support of individuals, companies, foundations, and trusts – from delivering

our award-winning heritage and education projects to restoring buildings of international significance.

To support us, please talk to a team member or scan the QR code below.





ENJOY A DERBYSHIRE DAY OUT DISCOUNT

Explore Derbyshire and
get more for your money!

Purchase a ticket this year from one of the
featured attractions listed below and get a
discount or special offer when you present
your ticket at any of the other attractions.

Bakewell Old
House Museum

Birdswood Canal
Boat Trips

Creswell
Crags

Crich Tramway
Village

Cromford Mills

Museum & Art
Gallery (Derby
Museums)

Great British Car
Journey

National Stone
Centre

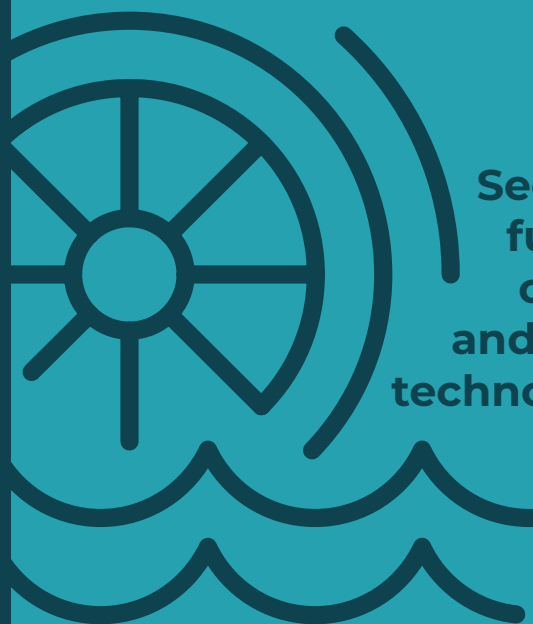
Peak District
Mining Museum

Wirksworth
Heritage Centre



see cromfordmills.org.uk for more details

Water Power Is Back!



See the
fusion
of old
and new
technology

Cromford Waterpower

2023 will see hydroelectric power return to the site with the reinstatement of a six-metre waterwheel, and the installation of a state-of-the-art hydro-turbine to power our buildings. The scheme also includes water source heat pumps to provide heating and refurbishing the hydro-turbine at the Corn Mill in Cromford Village.

What You Need to Know

Please refer to our website for up to date information and how to make the most of your visit.

Cromford Mills is usually open all year round (except Christmas day). Admission to the site is free, with ample pay and display car parking. There is a small charge for access to the Arkwright Experience and for audio and guided tours.



Sir Richard Arkwright's Cromford Mills

Mill Road, Cromford, Matlock
Derbyshire, DE4 3RQ

Email us at
info@arkwrightsociety.org.uk
Or call us on 01629 823 256

By Car

Cromford Mills is located just
off the A6 and is within walking
distance from Cromford village.
We are approximately 16 miles
north of Derby and within easy
reach of the M1 (approx. 20 mins).

By Train

We are a 10-minute walk
from Cromford train station.
Call National Rail for more
information 03457 48 49 50.

By Bike

We have bike racks on-site and
shower facilities.

By Bus

Convenient bus stops are
located just outside the mill. Visit
traveline.info for bus timetables.



The Arkwright Society is a registered charity (no. 515526). The Arkwright Society Ltd. is a company registered in England and Wales (Company no. 01630237). Registered with Entrust as an approved environmental body no. 337946. Cromford Mills are part of the Derwent Valley Mills World Heritage Site.